

MAGIC CARPET

Industrial UHF Fixed Reader (Table Top. POS)

- Compact design - Small and thin with built in Antenna.
- Sensor activated operating convenience.
- Read range control according to various application.
- One channel Fixed Reader.
- Convenient Firmware upgradability.
- Simple system integration.



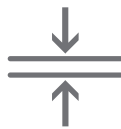
Power Button
Various operation



Infrared Sensor
Faster Scan Speed



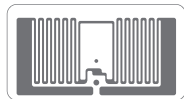
Touchpad
Simple scan



12mm
Ultrathin Design



No restrictions
Wide Usability



Excellent performance
Read before tag is reached



MAGIC CARPET

Industrial UHF Fixed Reader (Table Top. POS)

CPU	ARM7core
UHF Frequency	860 ~ 960MHz
Protocol	EPC Class Gen2/ISO 18000-6C
RF output power	5 ~ 30dbm adjustable 1dB step
Supply Voltage	5.0V DC
Interface	USB HID (Human Interface Devices) USB VCP (Virtual Com Port)
Notification	LED (Power, Operation mode)
User Interface	Capacitive touch sensor
Sensor	Infrared photo sensor, Capacitive touch sensor
Operation mode	Always On, Infrared photo sensor mode, Capacitive touch sensor mode
Antenna	Integrated circularly polarized
Read range	Upto 1.5M
Demension	199.8 (W) x 159.8 (L) x 12 (H) mm
Weight	
Operating Temp.	-20°C to 60°C
Storage Temp.	-30°C to 70°C
Humidity	0% to 95% relative humidity (non-condensing)

* Product specification and design will be subject to changes without notice.
(Product Development In Process)

